

Giving the N shore of Sandy Island a berth of at least 30m, steer to pass close S of Mealbeg S Card buoy. Note that a rock drying 2m lies inshore of Mealbeg, but Mealbeg itself is barely awash at LWS. Turn to starboard and steer 300° towards the low hill (22m) near the E end of Heir Island. When the centre of Two Women's Rock comes in line with the SE tip of Heir Island 225°, turn to port and steer 190°. Hold this course past the SW rocks of the Catalogues and until Drowlaun Point (on Sherkin) bears 214° and comes slightly to the right of Mount Lahan (77m) at the E end of Cape Clear. From this point a course of 225° will clear the Pigs and Mullin Rock, and pass 1.5 cables NW of Drowlaun Point (waypoint DP, 51°28'·7N 9°26'·2W).

Paris anchorage, Heir Island: West and East Skeam, beyond, and Horse Island and Mount Gabriel in the distance



## Dangers

### Baltimore North Passage and Heir Island

**Mealbeg**, dries 0.5m, close S of Turk Head

**Two Women's Rock** (above HW), 3 cables E of Heir Island, with shoals and rocks extending 2 cables N and 1 cable S

**The Pigs**, with 1m and 0.8m, 3 cables S by W of Two Women's Rock

**Mullin Rock**, 2.1m, 3 cables NW of Drowlaun Point, Sherkin Island

**Bream Rocks** (dry 1.8m), and **Greymare Rocks**, with less than 2m, forming a reef extending for 3.5 cables NE-SW, 2 cables S of Heir Island

**Toorane Rocks**, reef 5 cables by 2, extending NE-SW, 2 cables W of Bream Rocks. The SW part dries 2.8m and the NE part has two heads above HW.

**Corrignamoe Rocks**, drying rocks E and NE of Heir Island

## Lights and Marks

**Narrows Ledge** buoy, E Card VQ(3) 5s

**Mealbeg** buoy, S Card Q(6)+L Fl 15s

**Taylor** buoy, N Card Q

**Inishleigh** buoy, S Card Q(6)+L Fl 15s, in the River Ilan



## Anchorage

There is a very pleasant temporary anchorage on the south side of Heir Island, near the townland of Paris (a name which may be derived from *pallace*, an 18th-century fish-processing plant) The entrance has 7m between the islet on the E side and a drying rock on the W. The aerial photograph displays it well. Anchor in the middle of the pool in 3 to 4m, sand.

## Passage from seaward

For the N entrance to Baltimore from the W, see *Schull and Cape Clear to Baltimore North Passage*, p110.

## River Ilen to Oldcourt

The Ilen is navigable as far as the boatyards at Oldcourt, 4M upriver from Quarantine Island at the N end of The Sound, and 5M from Baltimore. The river is scenic and tranquil, and the trip is well worth making even if not going to one or other of the yards. The largest-scale chart is essential, and though the survey of the river dates from 1846 the channel is not much changed. Passage should however be attempted only on a high and rising tide, and only in daylight. There is a minimum depth of 1m at LAT, the shallowest point being close off the N point of Inishbeg. A S Card buoy marks Bostoon Rock (dries 0.1m), E of Inishleigh.

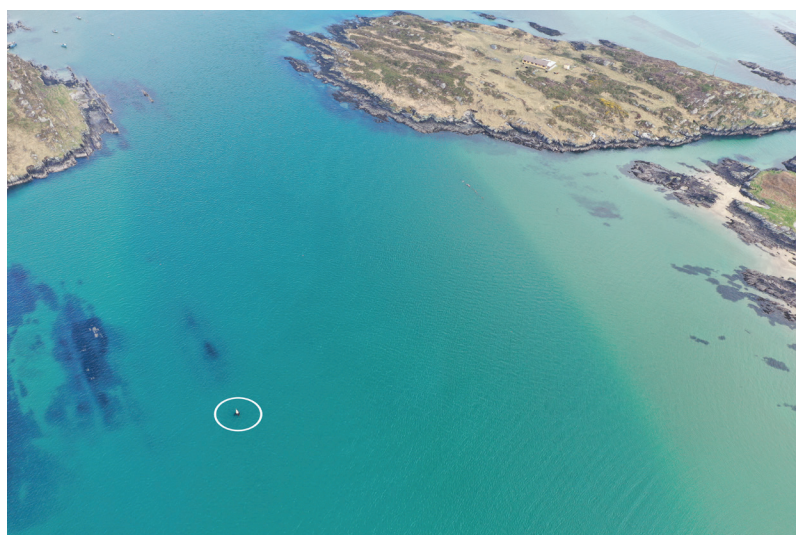
Leave Quarantine Island close to starboard and head for Inane Point, 5 cables ENE. Leaving Inishleigh S Card buoy to port, stay 0.5 cable off Inane Point while rounding it to open up the next stretch of 1.3M to Inishbeg. As with most winding river channels, the general rule is to stay wide on the bends. Hold mid-channel on the stretch to Inishbeg, then turn wide, staying on the Inishbeg (E) side of the turn to the N. Stay mid-channel at the narrows W of Inishbeg and do not turn to starboard until the slip at Reenadhuna is almost abeam. Keeping Reenadhuna House directly astern, head for the point on the N shore opposite the boathouse at the N end of Inishbeg. When 1 cable from this point, turn to starboard and steer to pass 50m off the Inishbeg boathouse. Hold this course for 0.5 cable past the boathouse and then turn to port and head for the jetty 2 cables E on the S bank beyond Inishbeg, leaving it 50m to starboard. From there to Oldcourt, stay in mid-channel.



(above) North Passage from Baltimore; view NW through The Sound, between Sandy Island (L) and Quarantine Island (R)



(above) Turk Head and Mealbeg buoy from the ESE. Mealbeg is just covered and its position is indicated by ripples. Tidal height about 0.7m. Heir Island in the background, L.



Mealbeg rock (with two heads in a line SW-NE) and its S Cardinal buoy (circled, lower L), from the WSW. Sandy Island, top R.



(above) Two Women's Rock (centre) in line with the SE tip of Heir Island (transit A, plan on p102); Cape Clear Island beyond, and Sherkin Island L



Drowlaun Point slightly to the R of Mount Lahan on Cape Clear Island (transit B, plan on p102)



*The ferry emerges from the North Passage at Baltimore, on her way to Cape Clear. View downriver from NE of Quarantine Island, L, with Mealbeg S Cardinal buoy, extreme R. The house and poles on Sandy Island are conspicuous*



Coming down-river, leave Inishleigh S Card buoy to starboard. Quarantine Island is hard to discern until quite close; the power cable poles on Sandy Island are however prominent on the skyline.

Competitive rowing craft use the river frequently, and a good lookout should be kept for them.

### Oldcourt

51°32'N 9°19'3W

There are two boatyards at Oldcourt. O'Donovan's (Oldcourt Boats, 028 21249, 087 232 4151) has a pontoon for temporary berthing, a slipway for vessels up to 30m and 400t, and a 90-tonne travelhoist, the largest in Ireland. Hull (wood, metal and GRP) and mechanical repairs, mobile crane, winter storage. Hegarty's (086 405 7599) has a slipway for vessels up to 20m and 150t. Mobile crane, hull and mechanical repairs, winter storage. Hegarty's specialises in classic wooden boat building and restoration.

### Anchorage

Anchorage is possible wherever convenient out of the main channel in the river, and temporary anchorage is possible in mid-

channel at Oldcourt. An alongside berth at Oldcourt may be available by permission; phone the yards.

### Skibbereen

Above Oldcourt the river is shallower but it is possible with care to reach Skibbereen, 2.5M upstream, by dinghy near HW. In the middle of town and upstream of the iron girder footbridge, there is a landing pontoon at the West Cork Hotel and steps at the head of a short tributary channel on the starboard hand. Skibbereen (2,903) has filling stations, supermarkets, shops, PO, doctors and comprehensive chandlery (CH Marine, phone 028 23190). Sail repairs and canvaswork, Franziska Sturm 086 245 3024. Taxis, phone 028 21258.

### Passage N of Heir Island – Goose Island Channel

⊕ GI 51°30'2N 9°26'W

This passage gives direct access above half tide from Baltimore to the Skeam Islands, Roaringwater Bay and Horse Island. The channels E and W of Goose Island, have least depth 1m to 1.5m at LAT. There is little trace now of the sandspit marked on the charts to the SE of Goose I. The principal dangers in the passage from Baltimore are Mealbeg, and the Corrignamoe rocks in mid-channel N of Heir Island pier. From Baltimore N Passage and the Ilen River, pass close S of Mealbeg buoy; the rock is almost always covered (*see photograph on p103*). Then stay within a cable of the mainland shore to the E; at half tide the

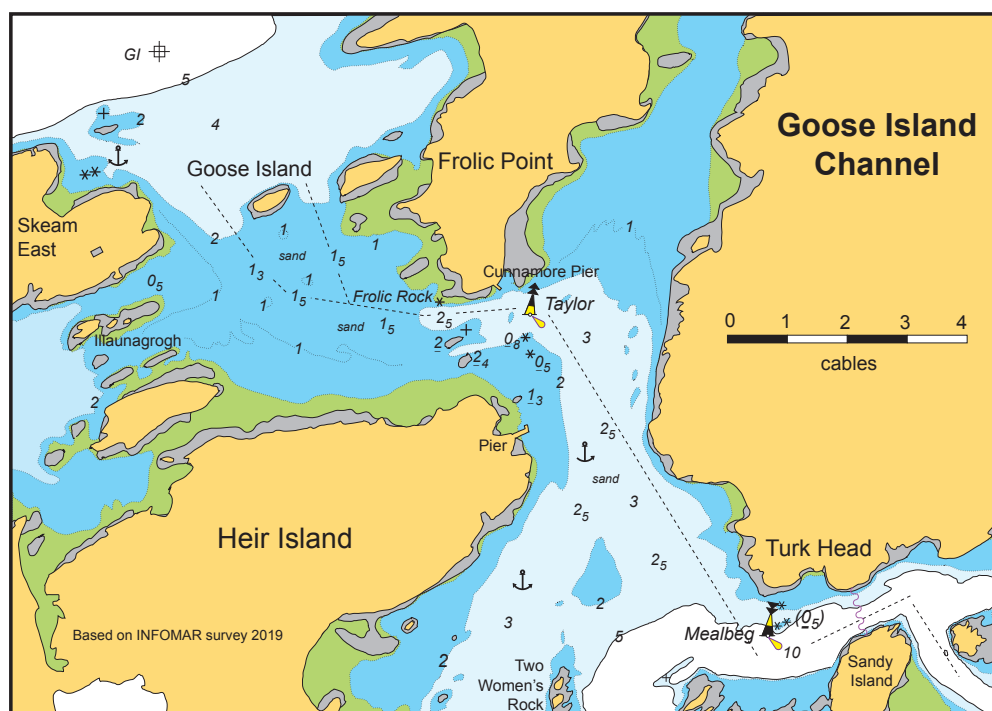
*Reenadhuna House from the S*



*Seven-cable stretch of the River Ilen at LAT, April 2019, centred on 51°30'7N 9°20'5W. This is the shallowest point in the passage to Oldcourt. Inishbeg boathouse, centre L. The Admiralty charts still fairly depict the channel even though the survey dates from the 1840s.*



*The boatyards at Oldcourt at LAT in April*



(below) The rocks NE of Heir Island:

(top) sea level view from the E at LWS; Taylor N Card buoy and Cunnamore Pier, extreme R; Frolic Point, R, and Skeam East (with its ruined house) L centre

(bottom) aerial view; Cunnamore pier, top, Heir Island pier, bottom L. Taylor buoy is circled.

E'most of the rocks NE of Heir Island will be covered. These rocks are E of a line joining Cunnamore and Heir Island piers. When the head of Cunnamore Pier bears NW, turn and steer to leave Taylor N Card buoy to port. Give Cunnamore Pier and the shore of Frolic Point a berth of 50m to avoid Frolic Rock and then steer 273°, with the ruined house on Skeam East fine on the starboard bow. Pass either one-third of the channel's width to the W of Goose, or 50m from the E side of the island. The centre of Goose Island touching the NE point of Heir Island clears the rocks off the NE point of Skeam East.

There is a substantial pier and slip at the NE point of Heir Island. Ferries run from Heir to Cunnamore Pier and (in summer) to Baltimore.

## Anchorage

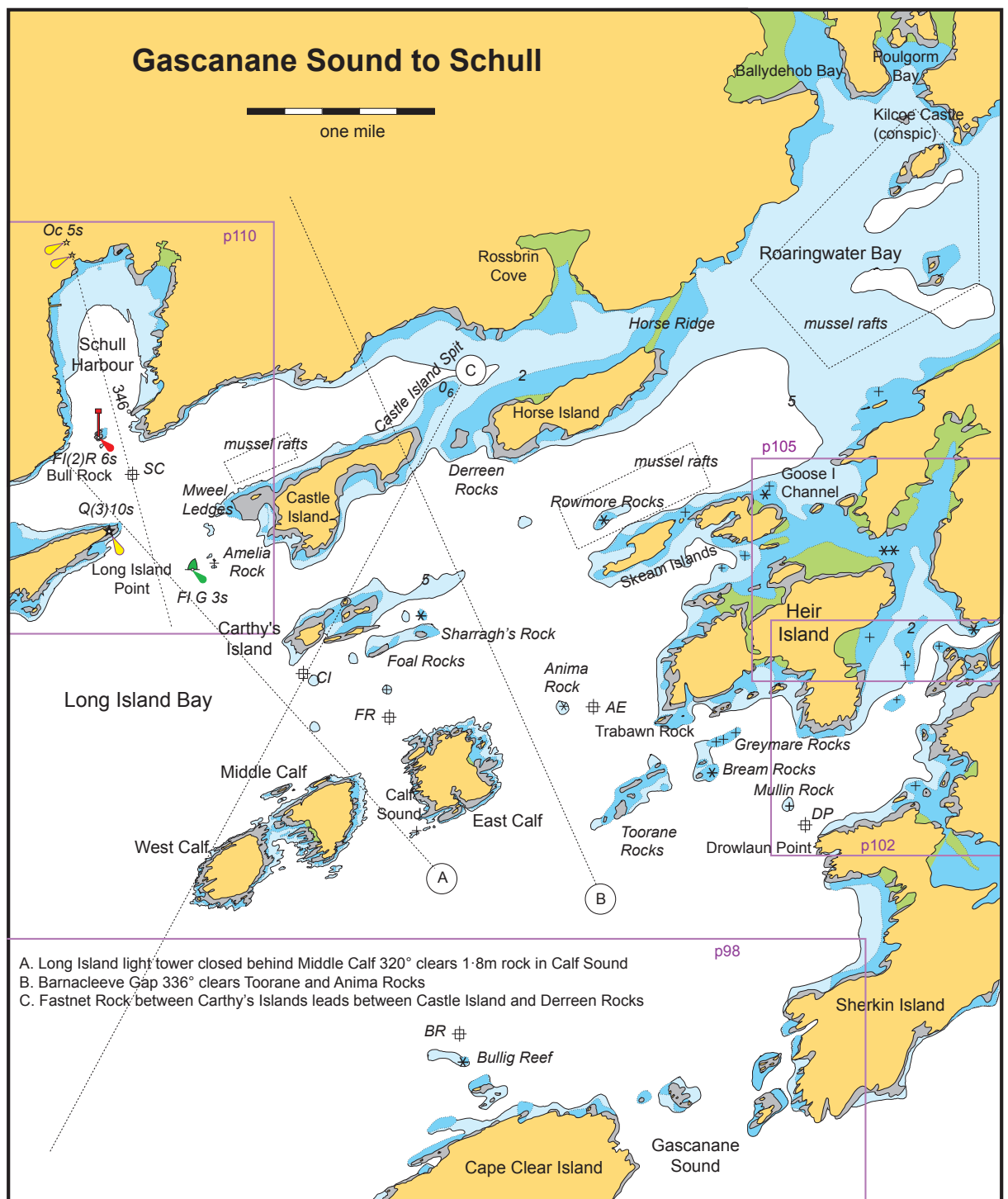
There is reasonable anchorage in 1.5 to 2.5m in good shelter N of Two Women's Rock and between Heir Island (S of the pier) and the mainland. Fine sandy beaches. There are four visitors' moorings SE of Heir Island Pier, and good anchorage off the beach on Skeam East, but beware the two rocks in the middle of the bay, which just dry.

## LONG ISLAND BAY

Long Island Bay lies between Cape Clear and Castle Point, and extends NE into Roaringwater Bay. The area offers many anchorages, lovely cruising and fascinating pilotage.







## Gascanane Sound and Cape Clear to Schull

Making N from Gascanane Sound or Cape Clear Island, course can be set W of West Calf Island or through Calf Sound, between East and Middle Calf Islands. The only danger on the course W of West Calf is the Bullig Reef (described in *North Coast of Cape Clear Island*, p98). For Calf Sound, steer first for the highest point of Middle Calf (11m). Long Island Point light tower closed behind the NE point of Middle Calf Island 320° clears the

rock (with 1.8m) SW of East Calf. Hold mid-channel through the sound and when clear head for Amelia buoy 313°, distant 1.25M. The buoy and Long Island Point will be almost in line on this course, which passes to the SW of the Carthy's Island group. Carthy's Island should be given a berth of at least a cable. Give Long Island Point a berth of a cable, and leave Bull Rock perch well to port on entering Schull Harbour. Mweel Ledges extend almost 3 cables W of Castle Island, with mussel rafts N of them.

## Dangers

There are many drying and underwater rocks within a cable of the shores in this area. The principal hazards further offshore are:

**Bullig Reef**, two rocks awash at LW, 4 cables N of Cape Clear Island.

**Bream Rocks** (dry 1.8m) and **Greymare Rocks**, with less than 2m, forming a reef extending for 3.5 cables NE–SW, 2 cables S of Heir Island

**Toorane Rocks**, reef 5 cables by 2, extending NE–SW, 2 cables W of Bream Rocks. The SW part dries 2.8m and the NE part has two heads above HW.

**Anima Rock** (dries 0.1m), in mid-channel between East Calf and Heir Island

**Rock** with 2.1m, in mid-channel between East Calf and the Carthy's Islands group

**Rock** with 1.8m, 2.5 cables SW of East Calf

**Rock** with 1.8m, 2.5 cables SW of Middle Calf

**Foal Rocks** (dries 2m), **Sharragh's Rock** (dries 2.8m), and a **rock** 1 cable N of Sharragh's Rock uncovering at LW, all 3 to 5 cables E of Carthy's Island.

**Amelia Rock**, 2.1m, 4 cables WSW of Castle Island

**Rowmore Rocks**, drying 0.3m, 2 cables NW of West Skeam Island.

**Derreen Rocks** (dry 3.4m), between Horse and Castle Islands

**Mweel Ledges** (drying 3.6m), extending 2 cables W of Castle Island

**Bull Rock** (dries 1.8m), in the middle of the entrance to Schull Harbour

**Baker Rock** (dries 0.1m), 0.5 cable off the W shore of Schull Harbour, 1.5 cables N of Schull Point.

## Carthy's Island group

⊕CI 51°29'·4N 9°30'·5W (3 cables SW)

There are several dangerous rocks to the SE and E of the Carthy's Island group. If Foal and Sharragh's Rocks are not showing, a mid-channel course between the Carthy group and East Calf clears them. Near LW the 2.1m rock S of Foal Rocks may be hazardous; waypoint ⊕FR 51°29'·3N 9°29'·7W clears it to the S.

## Anchorage

There is an attractive daytime anchorage inside the Carthy's Island group. Approach through the narrow channel SE of Carthy's Island, which has least depth 3m, or else by the E channel, between North and South Carthy's Islands, which has 1.2m. If using this entrance, keep the N face of South Carthy's Island open so as to pass well N of Sharragh's Rock and its N outlier. This

## Tides

### Long Island Bay

*In the entrance to Long Island Bay, between Crookhaven and the Fastnet, the streams set E and W, the E-going stream making at –0455 Cobh and the W-going at +0115 Cobh. Spring rate is 2.5 kn around the salient points and in the narrow channels between the islands, decreasing in strength towards the head of the bay. The generally E-going stream sets SE and S through the channels between the outer islands, the W-going stream NW and N.*

*Constant (Schull) –0027 Cobh; MHWS 3.2m, MHWN 2.7m, MLWN 1.0m, MLWS 0.4m.*

## Lights and Marks

**Amelia** buoy, SHM FI G 3s, AIS

**Long Island Point (Copper Point)**, white tower Q(3) 10s 16m 8M

**Schull** leading lights 346°, Oc 5s 11M, front 5m rear 8m, orange triangles on white lattice masts NE of Schull pier.

**Bull Rock**, stayed perch PHM, FI(2) R 6s 4m 4M

**Storm Water Outfall** buoy, Y, unlit, NE of Schull pier

anchorage is subject to some swell if there is a sea running in the bay. It is also exposed to NW winds when the rocks NE of Carthy's Island cover as the tide rises; the holding has been reported poor due to kelp, but close to the main Carthy's Island the bottom is clean sand. There is also an attractive anchorage off the beach (labelled "White Strand" on the chart) on the E side of East Calf. Approach steering SW and anchor in 2 to 4m, sand.

*Carthy's Island anchorage, from the W: Sharragh's Rock, and Foal Rocks, breaking*







*The Fastnet Rock in the gap between the Carthy's Islands leads between Castle and Horse Islands (transit C, plan on p106)*

### **Roaringwater Bay**

51°31'·5N 9°26'W

The channel E of East Calf Island is wide and deep but the dangerous Toorane and Anima Rocks lie in mid-channel. To clear W of these rocks (and E of Sharragh's Rock), steer 336° for the conspicuous Barnacleeve Gap. The Gap is just E of Mount Gabriel, which is 404m high with two conspicuous white radar domes on its summit (*see photograph*). If bad visibility prevents this line being seen, steer for East Calf Island and approach to 1 cable off its SE point before turning on to a course of 010° to leave the foul ground E of East Calf to port and Anima Rock to starboard. Alternatively, stay close W of longitude 9°28'·4W once well clear N of Gascanane Sound. Toorane Rocks are usually marked by breakers but the westernmost heads show only at extreme LW.

Anima Rock dries only 0·1m and frequently does not break. It may be passed on its S side with the S shores of Middle and West Calf Islands just open S of East Calf Island, 250° until the W point of Horse Island bears 335°. To pass E of Anima Rock, take safe bearings on Trabawn Rock (off the SW end of Heir Island) which always shows, or use waypoint  $\oplus$ AE 51°29'·3N 9°27'·9W, 2·5 cables E of Anima Rock. There is a deep channel N and NE of Toorane and Greymare Rocks but this is not recommended without local knowledge.

Rowmore Rocks, N of West Skeam Island, dry 0·3m at one point but are entirely surrounded by mussel rafts which extend the

length of West Skeam and halfway across the channel to the N. They are marked at their NW and NE corners by yellow buoys. Do not attempt the passage between the mussel rafts and the shore of West Skeam.

The inner part of Roaringwater Bay, NE of a line from Audley Cove to Illaunranhee, is almost entirely taken up by mussel rafts. However there is a clear passage along the NW shore, and Ballydehob and Poulgorm Bays offer attractive anchorages. Truchare Rock at the entrance to Poulgorm Bay always shows, and Kilcoe Castle is conspicuous. Ballydehob Bay has a drying quay immediately below the weir at the bridge, accessible by dinghy and a short walk from the village. PO, shops, pubs, restaurants, laundry.

### **Castle Island and Horse Island**

51°30'·5N 9°29'·3W

Derreen Rocks, which dry 3·4m, lie in mid-channel between Castle and Horse Islands. Castle Island Spit, with 0·6m, extends 4 cables NE from the E end of Castle Island. There is a navigable channel with least depth 2·7m between these dangers. Approaching from Gascanane Sound with Barnacleeve Gap bearing 336° (see above, Roaringwater Bay), when the Fastnet Rock comes in transit between Carthy's Islands alter course to pass 0·5 cable SE of Castle Island. When the E end of Castle Island is abeam, steer 041° until within 2 cables of the N shore of the Sound to clear S of Castle Island Spit.

The N side of Horse Island is shoal, so it is preferable to hold closer to the mainland side of Horse Island Channel once clear of Castle Island Spit. Horse Ridge, drying 0·6m in mid-channel and 0·2m within 50m of the mainland shore, extends between the NE end of Horse Island and the shore to the NE. It may be crossed near HW, keeping close to the mainland side.

*Mount Gabriel (L) and Barnacleeve Gap (R) from the SE*







## Rosbrin

51°31'·3N 9°28'·2W

This attractive cove with its ruined castle, 2.5M E of Schull, is substantially protected from swell, but is shallow. There is a small drying pier at the head of the bay, and a slipway in the NW corner. Rosbrin Boatyard, VHF Ch 16, phone 028 37352 or 086 268 4943, hull (wood and GRP), rigging, mechanical and electrical repairs, winter storage; travelhoist capacity 16 tonnes. Advice on visitors' moorings.

## Passage SW of Castle Island

Leamcon Tower (on the 107m summit, 1.5M N of Goat Island) in line with Long Island Point beacon 281° leads between the rocks W of Castle Island and Amelia Rock, but also leads very close to the rocks SW of the SW point of Castle Island. (Historic buildings enthusiasts may wish to note that the hilltop tower is not the 15th-century Leamcon

Castle; that is the ruin on Castle Point, 1.5M to the SW of the Tower.)

## SCHULL

⊕ SC, 51°30'·5N 9°32'W

Schull Harbour affords good shelter except in strong S or SE winds. The entrance lies between Schull Point on the W and Coosheen Point on the E. Foul ground extends 0.75 cable N of the Bull Rock perch; the rock is otherwise steep-to. The rest of the W shore is clear, but the E shore should not be approached closer than a cable. A hazardous rock lies approximately 1.5 cables SE of the S leading beacon, near the 3.7m sounding on the Admiralty charts at the head of the harbour; its position is marked by a noticeable gap in the moorings. It is a tempting but inadvisable place to anchor.

## Anchorage

One cable E of the pier in 2 to 4m, good holding. An anchor light and tripping line

*Leamcon tower in line with Long Island Point beacon leads between Amelia Rock and the rocks to the SW of Castle Island (transit A, plan on p110)*

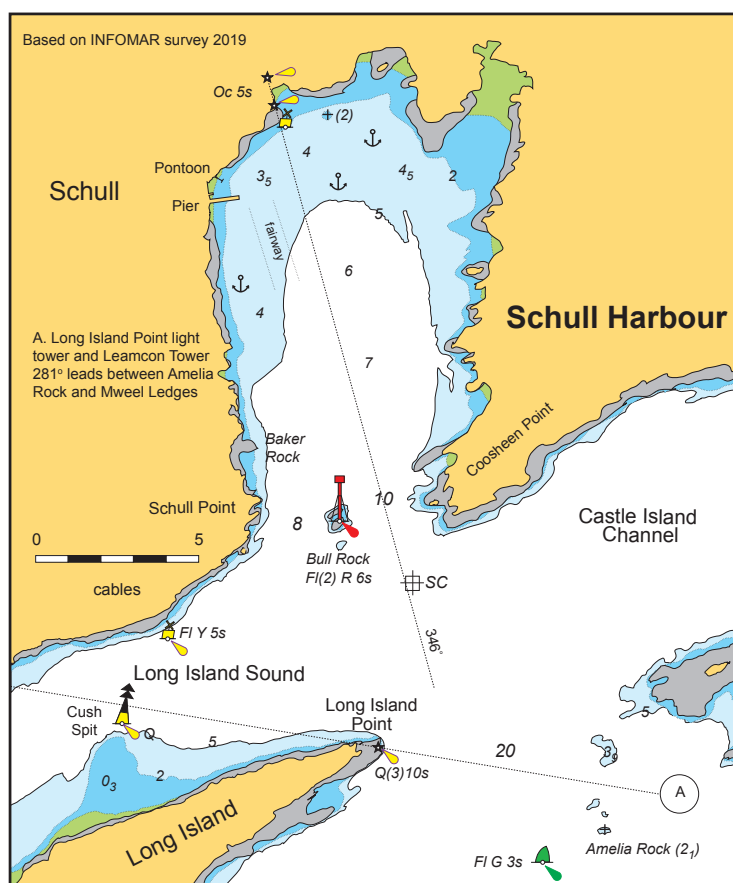


Rosbrin Cove from the S; the boatyard, top L



### Schull to: (M)

Crosshaven.....	61
Kinsale.....	48
Courtmacsherry..	40
Glandore.....	22
Castle Haven.....	18
Baltimore.....	7
Crookhaven.....	8
Ahakista.....	26
Castletownbere...	25
Glengarriff .....	29
Sneem.....	46
Derrynane.....	39
Portmagee.....	49
Dingle.....	65



are essential. Stay clear of the fairway to the pier, which is marked by lines of dan buoys. There are visitors' moorings on the NE side of the harbour; contact Schull Watersports 028 28554 for details. Constant -0027 Cobh; MHWS 3.2m, MHWN 2.7m, MLWN 1.0m, MLWS 0.4m.

There is 3m alongside the pier but a yacht should not be left unattended. The main steps on the N side are used by the ferry to Cape Clear. A pontoon opposite the pier is available for dinghy landing and can provide a berth for pick-up and drop-off.

### Facilities

Diesel from the filling station at Brosnan's supermarket, 200m from the pier. Moorings, chandlery and diving services, Schull Watersports 028 28554. Repairs, DT Marine,

028 28652. Sail repairs and canvaswork, Franziska Sturm 086 245 3024. Shops, ATM, pubs, restaurants, PO, doctor. Showers in the blue building at the head of the pier. Schull Harbour Sailing Club. Ferry to Cape Clear Island in summer.

### **SCHULL and CAPE CLEAR to BALTIMORE NORTH PASSAGE**

Entering Calf Sound from the N, keep Long Island Point light tower closed behind the NE point of Middle Calf Island 320° to clear the 1.8m rock SW of East Calf Island. When the NW shore of Heir Island opens S of East Calf 052°, steer 090° for Drowlaun Point to clear Toorane Rocks.

From Cape Clear North Harbour, steer 012°

*Bull Rock and its perch, at the entrance to Schull Harbour, viewed from the SE. Schull pier, R centre*







(above) Schull from the W

for the middle of East Calf until Carrigmore, in the middle of Gascanane Sound, is open W of Illaunbrock  $110^\circ$  (waypoint  $\oplus BR$ ,  $51^\circ 27' \cdot 6N$   $9^\circ 29' \cdot 2W$ , *plan on p98*). Then steer  $065^\circ$  to pass 1.5 cables NW of Drowlaun Point (waypoint  $\oplus DP$ ,  $51^\circ 28' \cdot 7N$   $9^\circ 26' \cdot 2W$ , *plan on p102*). Once past Drowlaun Point, bear to starboard to bring the Point just to the right of Mount Lahan 77m) on Cape Clear Island astern, and stay on this transit until abreast the SW-most of the Catalogues. For the remainder of the passage, with plan and photographs, see the Directions for the outward passage on pp102-103.

An alternative route from Schull (with sufficient rise of tide) runs N of Heir Island and through Goose Island Channel. Refer to the Directions on p105.



(below) Schull pier and pontoon

## SCHULL to CROOKHAVEN

W of the Cush Spit buoy, Long Island Sound ("Long Island Channel" on the chart) is clean on both sides, and the S side of the island is also clean to within a cable of the shore. There are three passages to the W from Long Island Sound: Goat Island Sound, Man-of-War Sound and Barrel Sound.

The S sides of Goat Island Little and Illaunricmonia to the W are also clean, but Bulligmore, WSW of Illaunricmonia, is dangerous, especially in settled conditions when it may not be breaking. Carrigduff

### Tides

#### Schull to Crookhaven

*In Lough Buidhe, Long Island Sound and Castle Island Channel the streams make E and W at a maximum rate of 1.5 kn at springs, but E and W of Goat Island they set N and S. The stream starts S through Man of War and Goat Island Sounds and E through Long Island Sound at -0530 Cobh; it starts W through Long Island Sound and N through Goat Island and Man of War Sounds at +0030 Cobh. The E-going stream S of Long Island runs towards Sherkin Island and the North Passage to Baltimore.*

*Constant (Schull) -0027 Cobh; MHWS 3.2m, MHWN 2.7m, MLWN 1.0m, MLWS 0.4m.*